



DAKOTA GOLD

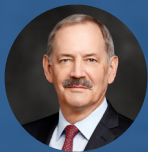
Revitalizing The Homestake District Of South Dakota



NYSE American: DC

Fact Sheet | June 2025

dakotagoldcorp.com



Robert Quartermain
*Co-Chair,
Director & CEO*

“Dakota Gold is expanding on the Homestake District legacy and creating shareholder value by advancing its Richmond Hill project to a surface heap leach gold operation as soon as 2029, and expanding the high-grade gold mineralization discovered at Maitland.”

INVESTMENT THESIS

Key attributes that make Dakota Gold stand out as a unique investment opportunity



Advancing
Richmond Hill - largest
undeveloped oxide
gold resource in the
US to production as
soon as ~2029



Two discoveries
at Maitland along
strike from
+40m Oz Gold
producing historic
Homestake Mine



Leadership team
with track record
success and local
open pit and
underground
mining experience



Projects located in historic
Homestake District with
existing infrastructure



Principle Projects on Private Land
= Positive attribute for
efficient permitting



Fully funded \$47M
cash balance
(as at Mar 31, 2025)
provides years of
catalysts with no
dilution

This Fact Sheet contains Forward-Looking Statements, please see company website for disclosure.



info@dakotagoldcorp.com



[@dakotagoldcorp](https://twitter.com/dakotagoldcorp)



[Linkedin.com/company/dakotagold/](https://www.linkedin.com/company/dakotagold/)



dakotagoldcorp.com



+1 778 655 9638

Homestake District: New Opportunities



Richmond Hill Gold Project

- Private Land
- Over 3,000 mineral acres
- Development stage oxide heap leach gold project

S-K 1300 Mineral Resource

Heap Leachable:

3.65 M oz M&I Gold
2.61 M oz Inferred Gold

38.1 M oz M&I Silver
22.8 M oz Inferred Silver

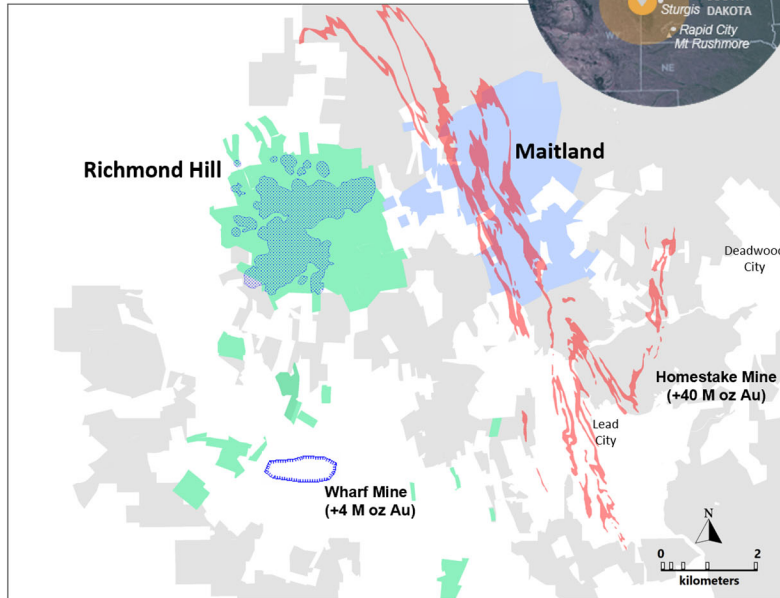
Combined Heap Leach & Milled:

4.64 M oz M&I Gold
5.06 M oz Inferred Gold

47.8 M oz M&I Silver
52.1 M oz Inferred Silver

Legend - Homestake District and Key Projects

- Dakota Gold Land Package
- Richmond Hill – Private Land
- Homestake Iron Formation
- Richmond Hill resource cone
- Wharf open pit mine
- Maitland - Private Land



Maitland Gold Project

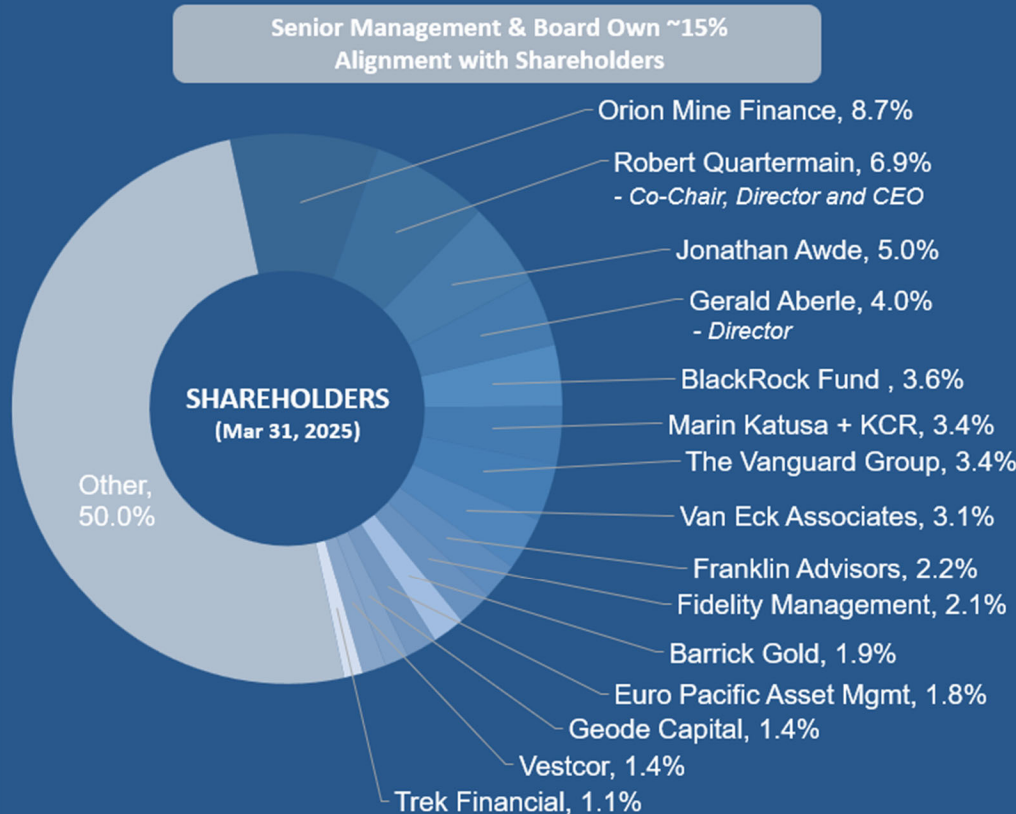
- Private Land
- 2,364 mineral acres
- Contiguous with Homestake Mine
- Two Discoveries:
 - JB Gold Zone Homestake Mine-style gold mineralization (iron formation)
 - Average Grade: 10.76 g/t Au over 4.0 meters
 - Unionville Zone shallow Tertiary epithermal gold mineralization
 - Average Grade: 4 g/t Au over 6.4 meters

Dakota Gold NYSE American: DC

CAPITAL STRUCTURE (Mar 31, 2025)	(in millions)
Shares Outstanding	112.0
Stock Options	4.2
Restricted Share Units	1.6
Performance Share Units	0.5
Warrants Outstanding	6.8
Fully Diluted ¹	125.0
Cash (as at Mar 31, 2025)	\$47
Market Cap (as at June 4, 2025)	~\$410

ANALYST COVERAGE

Agentis Capital	Michael Gray
BMO Capital	Andrew Mikitchook
Canaccord Genuity	Peter Bell



Transformational Year Leading to the Next Era of the Homestake Gold District

2025 Plans:

- Complete Richmond Hill Initial Assessment with Cash Flow planned for mid-2025
- Commence Feasibility Study work for Richmond Hill mid-2025
- Continue infill and step-out drilling at Richmond Hill
- Ongoing permitting studies
- Assessing drill program targeting at Maitland