



DAKOTA GOLD

Revitalizing The Homestake District Of South Dakota



NYSE American: DC Fact Sheet | March 2025

dakotagoldcorp.com

INVESTMENT THESIS

Key attributes that make Dakota Gold stand out as a unique investment opportunity



Robert Quartermain
Co-Chair,
President & CEO

- Mining Experience:

- Canadian Mining Hall of Fame, Inductee - 2022
- Pretium Resources, Founder and CEO - 2010 to 2019
- SSR (formerly Silver Standard), CEO - 1985 to 2010

“Dakota Gold is advancing its Richmond Hill project to a surface heap leach gold operation by ~2029, and expanding the high-grade mineralization discovered at Maitland.”



Projects located in historic Homestake District - Tier 1 Jurisdiction



Principle Projects on Private Land = Positive attribute for efficient permitting



Leadership team with track record success and local Homestake & Wharf Mine experience



Two discoveries at Maitland along strike from +40m Oz Gold producing historic Homestake Mine



Richmond Hill 3.6 million-ounce M&I heap leach gold resource, one of the largest undeveloped resources in US and globally held by junior



Existing Richmond Hill permit could potentially be amended to allow restart & expansion with State & County approval

This Fact Sheet contains Forward-Looking Statements, please see company website for disclosure statements



info@dakotagoldcorp.com



[@dakotagoldcorp](https://twitter.com/dakotagoldcorp)



[Linkedin.com/company/dakotagold/](https://www.linkedin.com/company/dakotagold/)



dakotagoldcorp.com

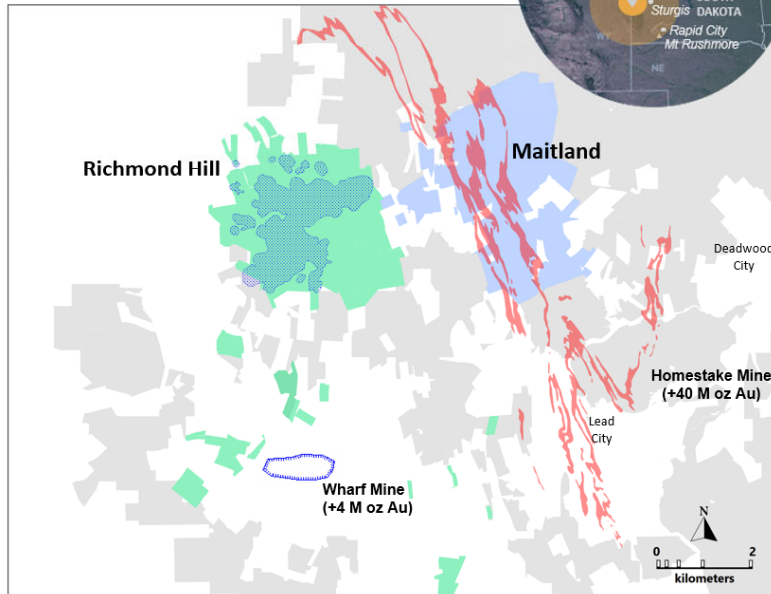


+1 778 655 9638

Homestake District: New Opportunities

Legend - Homestake District and Key Projects

- Dakota Gold Land Package
- Homestake Iron Formation
- Richmond Hill – Private Land
- Richmond Hill resource cone
- Wharf open pit mine
- Maitland - Private Land



Richmond Hill Gold Project

- Private Land
- Over 3,000 mineral acres
- Development stage oxide heap leach gold project
- S-K 1300 Mineral Resource

Heap Leachable:

3.65 M oz M&I Gold
2.61 M oz Inferred Gold

38.1 M oz M&I Silver
22.8 M oz Inferred Silver

Combined Heap Leach & Milled:

4.64 M oz M&I Gold
5.06 M oz Inferred Gold

47.8 M oz M&I Silver
52.1 M oz Inferred Silver

Maitland Gold Project

- Private Land
- 2,364 mineral acres
- Contiguous with Homestake Mine
- Two Discoveries:
 - JB Gold Zone Homestake Mine-style gold mineralization (iron formation)
 - Average Grade: 10.76 g/t Au over 4.0 meters
 - Unionville Zone shallow Tertiary epithermal gold mineralization
 - Average Grade: 4 g/t Au over 6.4 meters

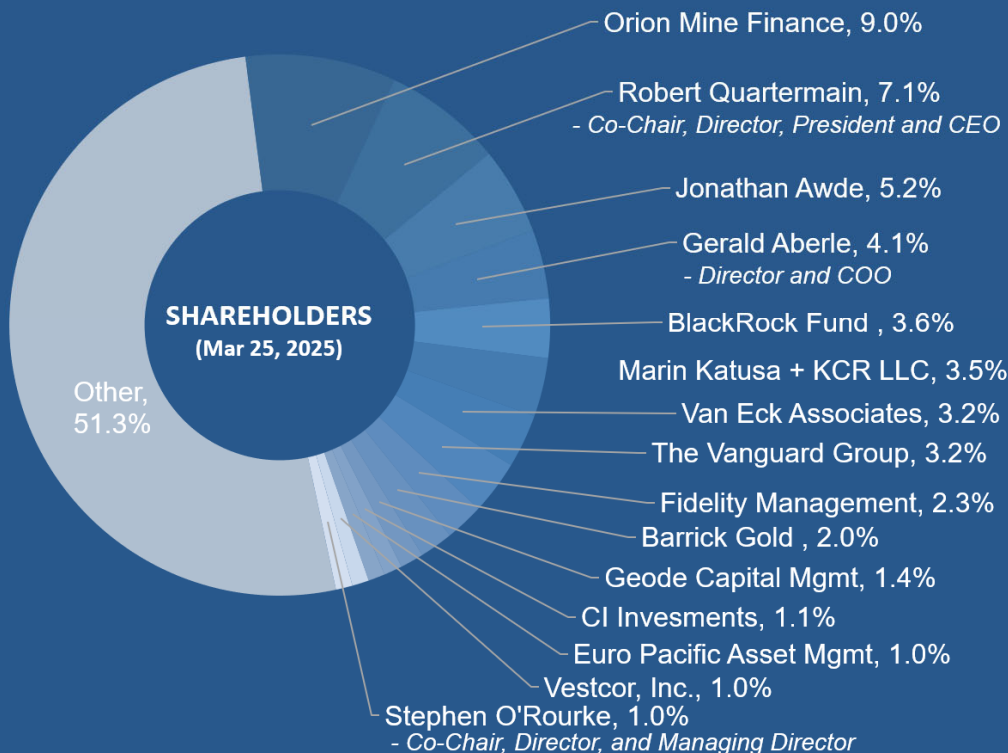
Dakota Gold NYSE American: DC

CAPITAL STRUCTURE (Dec 31, 2024)	(in millions)
Shares Outstanding ¹	108.0
Stock Options	4.2
Restricted Share Units	1.5
Performance Share Units	0.7
Warrants Outstanding	7.6
Fully Diluted ¹	121.9
Cash (as at Mar 25, 2025)	\$47
Market Cap (as at Mar 25, 2025)	~\$293

ANALYST COVERAGE

Agentis Capital	Michael Gray
BMO Capital	Andrew Mikitchook
Canaccord Genuity	Peter Bell

Management Owns ~15% Alignment with Shareholders



1. Includes 12.4 million shares disclosed in 8-K filing Mar 24, 2025

Transformational Year Leading to the Next Era of the Homestake Gold District

2025 Plans:

- Complete Richmond Hill Initial Assessment with Cash Flow planned for mid-2025
- Commence Feasibility Study work for Richmond Hill mid-2025
- Continue infill and step-out drilling at Richmond Hill
- Ongoing permitting studies
- Assessing drill program targeting at Maitland