



# DAKOTA GOLD

## Revitalizing The Homestake District Of South Dakota



NYSE American: DC Fact Sheet | February 2025

[dakotagoldcorp.com](http://dakotagoldcorp.com)

### INVESTMENT THESIS

Key attributes that make Dakota Gold stand out as a unique investment opportunity



**Robert Quartermain**  
Co-Chair,  
President & CEO

- Mining Experience:

- Canadian Mining Hall of Fame, Inductee - 2022
- Pretium Resources, Founder and CEO - 2010 to 2019
- SSR (formerly Silver Standard), CEO - 1985 to 2010

“Dakota Gold is advancing its Richmond Hill project to a surface heap leach gold operation by ~2029, and expanding the high-grade mineralization discovered at Maitland.”



Projects located in historic Homestake District - Tier 1 Jurisdiction



Principle Projects on Private Land = Positive attribute for efficient permitting



Leadership team with track record success and local Homestake & Wharf Mine experience



Two discoveries at Maitland along strike from +40m Oz Gold producing historic Homestake Mine



Richmond Hill 3.6 million-ounce M&I heap leach gold resource, one of the largest undeveloped resources in US and globally held by junior



Existing Richmond Hill permit could potentially be amended to allow restart & expansion with State & County approval

This Fact Sheet contains Forward-Looking Statements, please see company website for disclosure statements



[info@dakotagoldcorp.com](mailto:info@dakotagoldcorp.com)



[@dakotagoldcorp](https://twitter.com/dakotagoldcorp)



[Linkedin.com/company/dakotagold/](https://www.linkedin.com/company/dakotagold/)



[dakotagoldcorp.com](http://dakotagoldcorp.com)

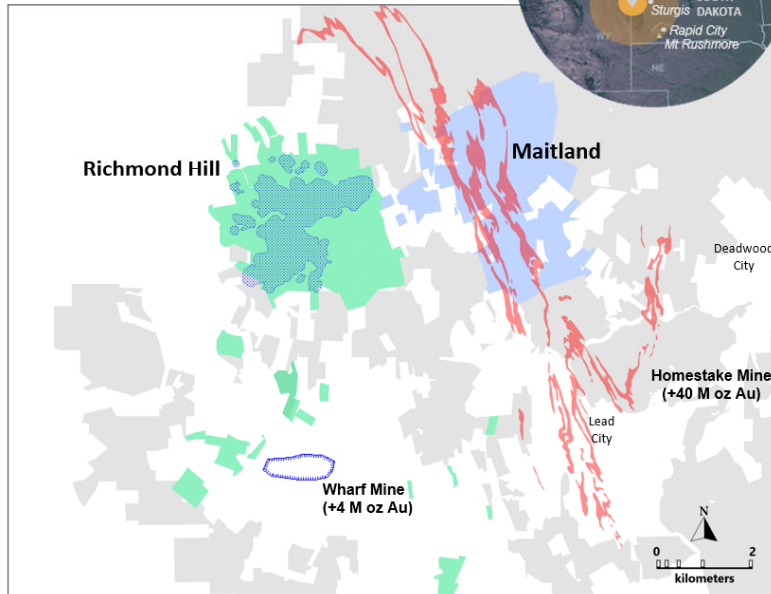


+1 778 655 9638

# Homestake District: New Opportunities

Legend - Homestake District and Key Projects

- Dakota Gold Land Package
- Richmond Hill – Private Land
- Homestake Iron Formation
- Richmond Hill resource cone
- Wharf open pit mine
- Maitland - Private Land



## Richmond Hill Gold Project

- Private Land
- Over 3,000 mineral acres
- Development stage oxide heap leach gold project
- S-K 1300 Mineral Resource

### Heap Leachable:

3.65 M oz M&I Gold  
2.61 M oz Inferred Gold

38.1 M oz M&I Silver  
22.8 M oz Inferred Silver

### Combined Heap Leach & Milled:

4.64 M oz M&I Gold  
5.06 M oz Inferred Gold

47.8 M oz M&I Silver  
52.1 M oz Inferred Silver

## Maitland Gold Project

- Private Land
- 2,364 mineral acres
- Contiguous with Homestake Mine
- Two Discoveries:
  - JB Gold Zone Homestake Mine-style gold mineralization (iron formation)
    - Average Grade: 10.76 g/t Au over 4.0 meters
  - Unionville Zone shallow Tertiary epithermal gold mineralization
    - Average Grade: 4 g/t Au over 6.4 meters

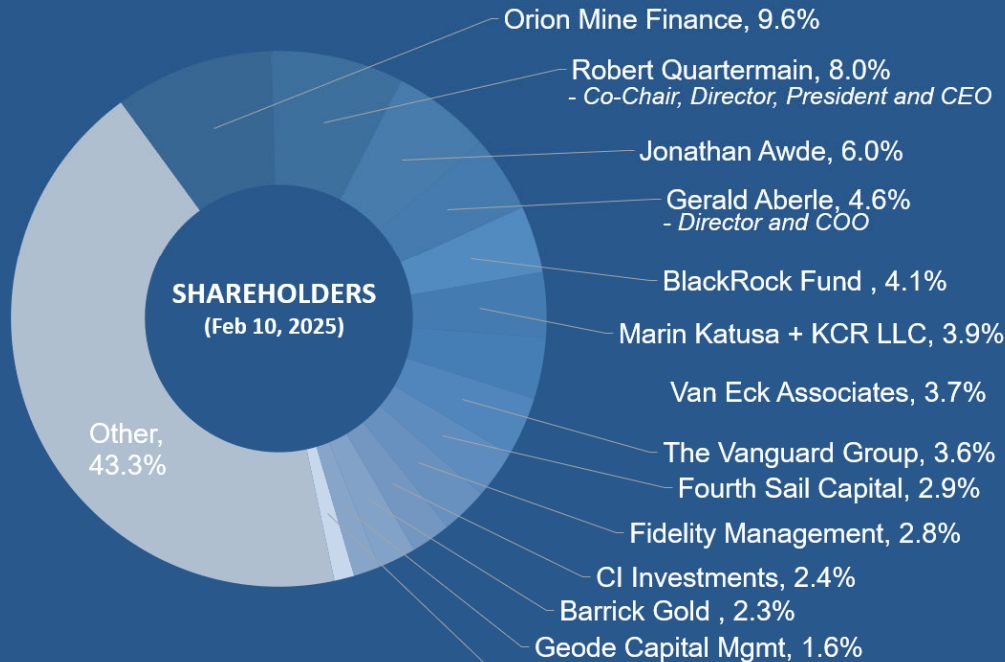
# Dakota Gold NYSE American: DC

CAPITAL STRUCTURE (Sep 30, 2024)	(in millions)
Shares Outstanding	93.7
Stock Options	4.6
Restricted Share Units	1.5
Performance Share Units	0.7
Warrants Outstanding	7.6
Fully Diluted	108.1
Cash (as at Sep 30, 2024)	\$14.7
Market Cap (as at Feb 10, 2025)	~\$292

ANALYST COVERAGE	
Agentis Capital	Michael Gray
BMO Capital	Andrew Mikitchook
Canaccord Genuity	Peter Bell

Management Owns ~15%  
Alignment with  
Shareholders

Note: Dakota Gold included  
in Russell 3000 and GDXJ  
Indices (as of Jun 2022)



## Transformational Year Leading to the Next Era of the Homestake Gold District

### 2025 Plans:

- Updated Richmond Hill Initial Assessment with Cash Flow planned for mid-2025
- Begin Feasibility Study work for Richmond Hill
- Continue infill and step-out drilling at Richmond Hill
- Infill and step-out drill program at Maitland to connect mineralized ledges at JB Gold Zone
- Drilling to test North Drift Discovery Up-dip at Maitland and Blind Gold to the north of the Maitland property