



DAKOTA GOLD

Building the Next Gold Mine in the Homestake District

NYSE American: DC Fact Sheet | June 2026

dakotagoldcorp.com



INVESTMENT THESIS

Key attributes that make Dakota Gold stand out as a unique investment opportunity



Robert Quartermain
*Co-Chair,
Director & CEO*

“Dakota Gold, NYSE American: DC is a unique investment opportunity for exposure to a U.S. development stage gold asset, with Richmond Hill and high-grade gold exploration optionality at Maitland.”



Richmond Hill - advancing one of the largest undeveloped heap leach gold resources in the U.S. with production as soon as 2029

- Robust economics outlined in IA with Cash Flow - July 2025
- Pre-Feas Study H2 2026
- Feas Study H1 2027

Maitland Gold - Infill drilling 2026 and targeting maiden resource Q1 2027



Leadership team with track record success and local open pit and underground mining experience



Located in historic Homestake District of South Dakota with existing infrastructure



Principle Projects on Private Land State and County permitting



\$107M
Cash Balance
(as at Mar 31, 2026)
Funded through Feasibility

This Fact Sheet contains Forward-Looking Statements, please see company website for disclosure statements



info@dakotagoldcorp.com



[@dakotagoldcorp](https://twitter.com/dakotagoldcorp)



[Linkedin.com/company/dakotagold/](https://www.linkedin.com/company/dakotagold/)



dakotagoldcorp.com



+1 778 655 9638

Richmond Hill Gold Project

- Private Land
- Over 3,000 mineral acres
- Development stage

S-K 1300 Heap Leachable Resource:

3.65 M oz M&I Gold
2.61 M oz Inferred Gold
38.1 M oz M&I Silver
22.8 M oz Inferred Silver

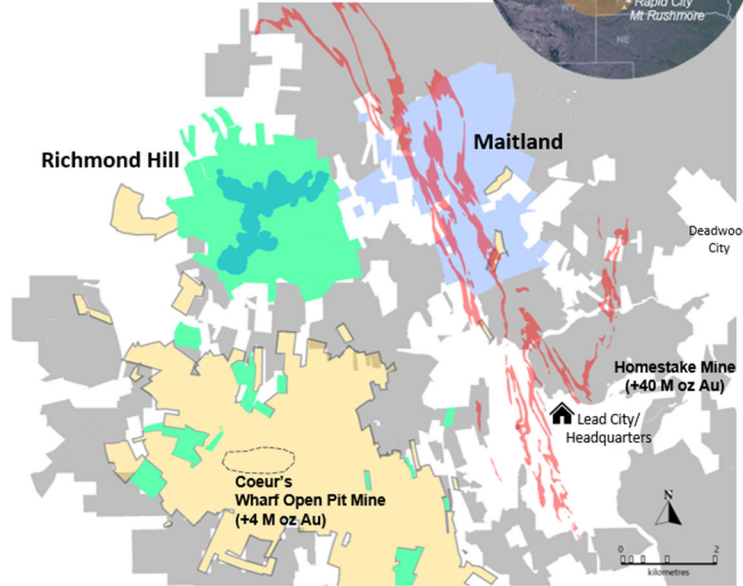
S-K 1300 IACF (at US \$2,350/oz Au)

(US\$)	M&I plan	MI&I plan
After-tax NPV _{5%}	\$1.6 B	\$2.1 B
After-tax IRR	55%	59%
Initial Capital	\$384 M	\$383 M
After-tax Payback (yrs)	1.7	1.5
Mine Life (yrs)	17	28
LOM Gold Prod (M ozs)	2.60	3.98
LOM Avg Annual Gold Prod (oz/yr)	153,000	142,000
LOM AISC (\$/oz)	\$1,047	\$1,050

Homestake District: New Opportunities

Legend - Dakota Gold holds over ~48k mineral acres in the Homestake District

- Dakota Gold Land Package
- Richmond Hill – Private Land
- Homestake Iron Formation
- Richmond Hill – M&I resource
- Wharf open pit mine
- Maitland - Private Land
- Wharf Land Package
- 🏠 Dakota Gold Headquarters



Maitland Gold Project

- Private Land
- 2,364 mineral acres
- Exploration stage

Contiguous with Homestake Mine

Two Discoveries:

- **JB Gold Zone Homestake Mine-style gold mineralization (iron formation)**
 - Average Grade: 10.76 g/t Au over 4.0 meters
 - Analogous to Homestake's West Ledge System - 6 million oz gold produced with Average grade: 11.63 g/t Au over 6.1 meters
- **Unionville Zone shallow Tertiary epithermal gold mineralization**
 - Average Grade: 4 g/t Au over 6.4 meters

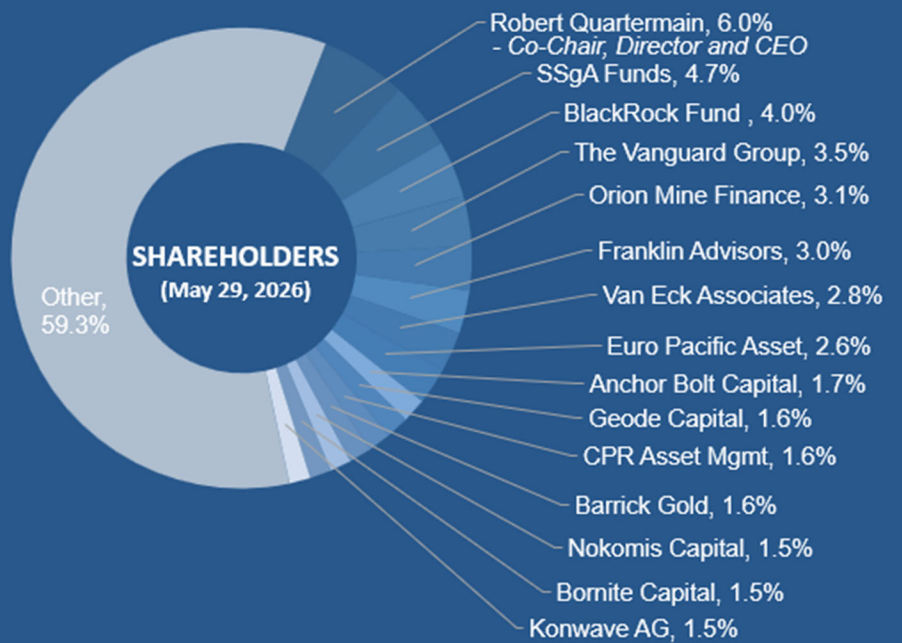
Dakota Gold NYSE American: DC

CAPITAL STRUCTURE (Mar 31, 2026)	(in millions)
Shares Outstanding	133.5
Stock Options	3.9
RSU and PSU	1.1
Fully Diluted	138.6
Cash (as at Mar 31, 2026)	\$107
Market Cap (as at May 29, 2026)	~\$771

ANALYST COVERAGE	
Agentis Capital	Michael Gray
BMO Capital	Andrew Mikitchook
Canaccord Genuity	Peter Bell
CIBC	Luke Bertozzi
H.C. Wainwright	Heiko F. Ihle
Scotiabank	Eric Winmill

Senior Management & Board
Own ~8%
Alignment with Shareholders

Jan 1, 2025 – Dakota Gold **+161%**
May 29, 2026 Spot Gold **+72%**
Performance S&P 500 **+28%**



Richmond Hill – Advancing Feasibility and Permitting

- Pre-Feasibility Study H2 2026
- Preliminary and final metallurgical testing results
- Infill and expansion drilling
- Baseline data collection for permitting
- Filing the Notice of Intent

Maitland Gold

- Unionville Zone - infill drilling 2026 and targeting maiden resource Q1 2027
- JB Gold Zone - continue to evaluate high-grade optionality opportunities

2026 Catalysts: